

BAINBRIDGE AIRPLANE CRASH

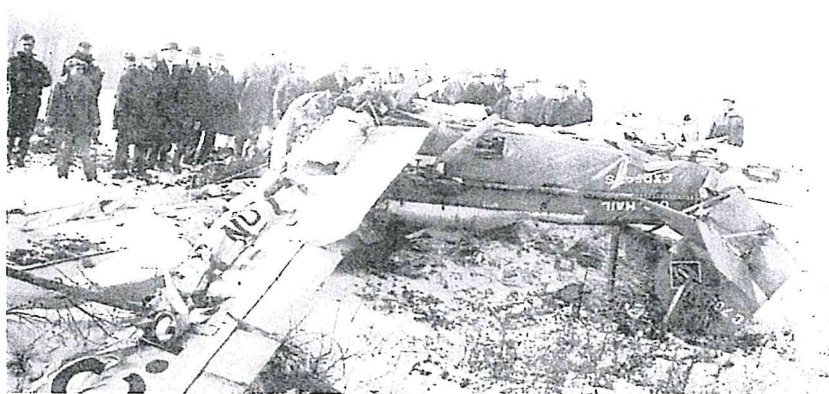
What: Display of c.1927 Douglas M-3 airplane wing recovered from the December 2, 1929 crash of the air mail plane in Bainbridge Twp.

Where: Bainbridge Twp. Historical Society Museum
17870 Chillicothe Rd. (Rt 306)
Bainbridge Twp. OH 44023
(south of the Fire Department)

When: Open House Saturday, September 16 from 1:00 – 4:00pm
Or come during any of our open houses on the third Saturday of each month 1-4pm.
Or call for a special appointment – (440) 399-7185

This is a rare opportunity to see a piece of mail plane history. The plane crashed 12/2/1929 during a heavy snowstorm on it's way to Cleveland from Pennsylvania. The three-day search for the plane included flights over the area by Charles Lindbergh and other pilots. The wreckage was not found until December 5 by two rabbit hunters. The pilot had jumped before the crash, but was too close to the ground for the parachute to fully open. He was found frozen to death. The wing was left behind when the wreckage was removed and has been stored in a Bainbridge barn for decades. We hope you'll come to see this treasure!

Photo of actual crash on Haskins Road



www.BainbridgeHistoricalSociety.org

Bissell-Tucek Museum 17870 Chillicothe Road, Bainbridge Twp.